

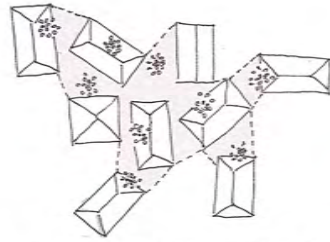
YOBITSUGI Roof-garden

Roofs are a commons that is unique to the urban scape. The density of roofs is characteristic to the urban context as houses are not situated close together in rural regions. In a city starved of space, the use of the roof as a playscape of gardens and gathering spaces is not explored despite its accessibility and availability. The areas that were once the boundary between houses have been filled in with pathways and creeper plants that shade the street and road beneath it. Through YOBITSUGI Roof-garden, the houses are no longer individual houses, instead they are transformed into an archipelago of new experiences and interactions.

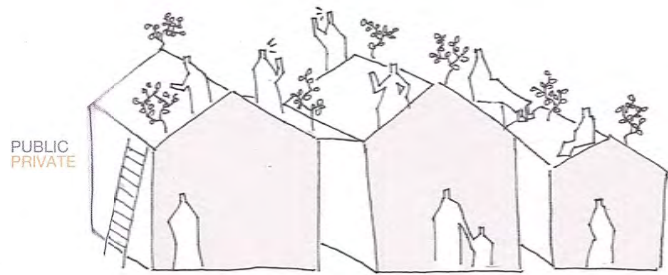


呼び継ぎ

Yobitsugi is a Japanese technique joining together fragments of different ceramic wares to fix a previously broken one. The resulting finished piece has added character and celebrates the beauty of it being once broken.

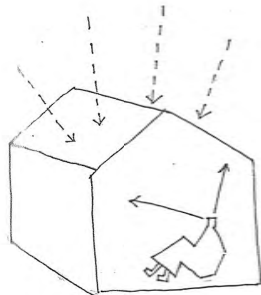


The art of Yobitsugi inspired the piecing together of individual roofs of houses in the city into a giant park.

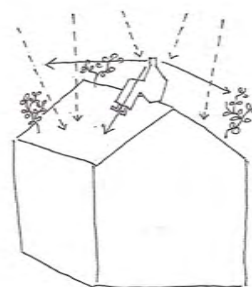


PUBLIC
PRIVATE

The line between public and private ownership becomes blurred and people stop seeing themselves as individuals and contribute more to the city. Each roof becomes part of a bigger whole and adds beauty and value to the park by providing fruits, herbs, tea leaves and vegetables to the public and allowing people to admire the tranquil stone gardens.



Currently, the roof is used as a shelter from the elements and the weather.



By creating a seasonal park open to the public on the rooftops, the people are exposed to the seasons and have the opportunity to be mesmerized by the city and nature.



FRUIT GARDEN

春: Cherries, Strawberries
夏: Cherries, Peaches, Ume
秋: Kyoho Grapes, Peaches, Sudashi
冬: Kaki, Mikan, Strawberries, Yuzu

COMBINED ROOFS

VEGETABLE GARDEN

春: Kabu, Komatsuna, Nanchana
夏: Edamame, Komatsuna, Shungiku
秋: Komatsuna, Shungiku
冬: Komatsuna, Mizuna

HERB GARDEN

春: Sansho, Shishito
夏: Karashi, Sansho, Shiso
秋: Mitsuba, Sansho
冬: Misuba

TEA GARDEN

春: Gyokuro, Sencha, Matcha
夏: Bancha, Kokucha, Oolong
秋: Genmaicha, Kikucha
冬: Hojicha

STONE GARDEN

The fruits, herb, tea, vegetable and stone gardens undulate across the city, creating a seasonal kaleidoscope landscape that celebrates the city and nature as a whole.

People are welcome to pick herbs and vegetables for their home-cooked meals or tea leaves to brew tea. Seasonal vegetables can be harvested from the roof garden and shared amongst families that live in the city. People learn to work together and share resources that are grown right on their roofs.

By reconstructing the space of interaction to the roof, people are encouraged to leave their homes and mingle with their neighbours.

